



Outstanding Balance & Credit Enhancements

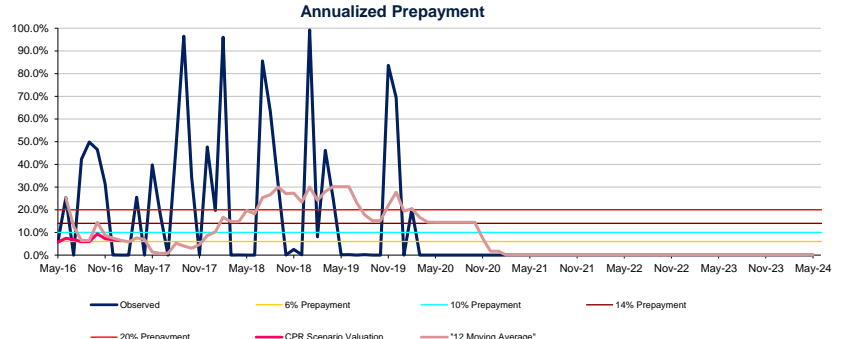
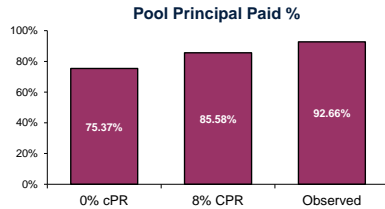
TER	Coupon	Initial Balance	Outstanding Balance	Distribution	Principal Paid%
A-2028:	IPC+3.65%	\$204,663	-	0.0%	100.00%
B-2031:	IPC+4,00%	\$29,238	\$15,419	100.0%	47.26%

Issue Age: 96 months
Pool Balance+Liquidity: \$17,169 MM
> 30 Days Delinquency: \$ -

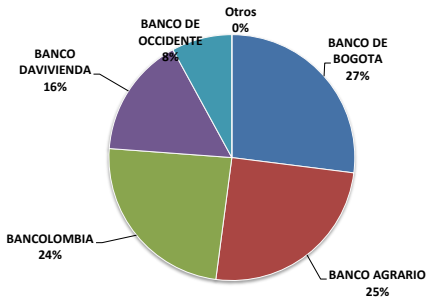
Performing Loans/TER		External Credit Enhancement
A	-	TC
A + B	111.35%	-

Pool Prepayment

Observed Net Prepayment March_May	Moving Average	WA Net Prepayment	CPR Scenario: Net Valuation May
0.00%	0.00%	14.41%	0.00%



Current Portfolio Bank Distribution



Stress Scenarios

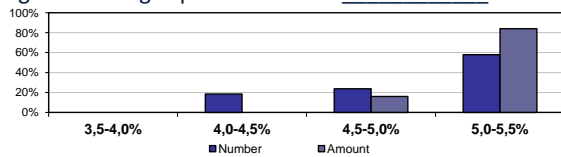
Projected amortization for different stress scenarios - CPR Net Prepayment: 10%, 20%,30% or 12 Month Moving Net Average (MA) - and CPI : 3%, 5%, 10% or latest CPI. Scenario 8: default of Bank with most concentration in month 48; scenario 9 default of Banks with rating below AAA in month 36

Scenarios	Net Prepayment	CPI	Delinquency	A	B	Residual \$mm
1	MA	Current	0.0%	100%	100%	\$ 2,143
2	10%	Current	0.0%	100%	100%	\$ 2,036
3	20%	Current	0.0%	100%	100%	\$ 1,882
4	30%	Current	0.0%	100%	100%	\$ 1,812
5	MA	3%	0.0%	100%	100%	\$ 1,846
6	MA	5%	0.0%	100%	100%	\$ 1,983
7	MA	10%	0.0%	100%	100%	\$ 2,371
8	MA	Current	27.0%	100%	93%	\$ -
9	MA	Current	0.0%	100%	100%	\$ 1,985

Notes:

- ▶ Performing Loans/TIPS %: Principal balance of loans with delinquency less than 30 days divided by TIPS capital balance on the closing date.
- ▶ External Credit Enhancement: Outstanding Balance of Class A Securities Credit Enhancement Mechanism.
- ▶ 0% CPR: Contract payment to loans in a zero-delinquency and zero-prepayment scenario.
- ▶ Prepayment is the aggregate of the sum of annualized partial and total prepayment. Weighted average (WA) prepayment of the issuance: Means the weighted prepayment times the loans balance of each month of the issuance.
- ▶ Prepayment Scenario for Valuation: prepayment scenario for price vendors valuation.
- ▶ Pool Interest Received: Monthly interest cash flow divided by the principal balance at the beginning of the month.
- ▶ Scenarios: Shows the projected amortization percentage of each security for different stress scenarios of prepayment and multiples of the expected delinquency. Residual amount after securities repayment is the present value discounted at the IIR of the correlative liabilities. For more information see the "Amortization and Cash Flows Tables Prepayment and Delinquency Scenarios" report at www.titularizadora.com
- ▶ Weighted Average Spread: Shows the pool portfolio distribution by coupon rate ranges by amount and by quantity. By amount with respect to the loan balance and by quantity with respect to the number of loans.
- ▶ WA Interest Rate: Weighted average interest rate times the loans principal balance.

Weighted Average Spread above CPI



WA Spread May	4.94%
WA Loans remaining term	101.4

"Titularizadora Colombiana S.A. releases this document strictly for the investors' information purposes. Although the data included here come from sources deemed as trustworthy by the company, Titularizadora Colombiana S.A. does not guarantee their accuracy. In no case its content may be considered as a financial or legal opinion nor as a business or investment recommendation by the company. Neither may it be considered as an invitation to do business or as an offer to buy or sell any kind of security. In any case, Titularizadora Colombiana S.A. is not responsible for the investment decisions made, or the result of any operation carried out by the addressees or any third parties based on the information contained in this document. Such responsibility falls exclusively on the investors that use such information. Variations may happen after the release of such information, therefore Titularizadora Colombiana S.A. reserves the right to change or update them at any time and without notice."